

<http://www.luxierusa.com/>

Installation Guide

Contemporary Roman Tub

Two Handle Roman Tub Faucet



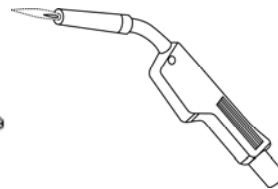
Tools you will need:



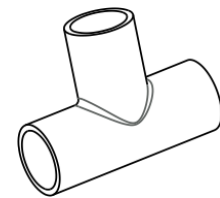
Adjustable Wrench



Groove join pliers



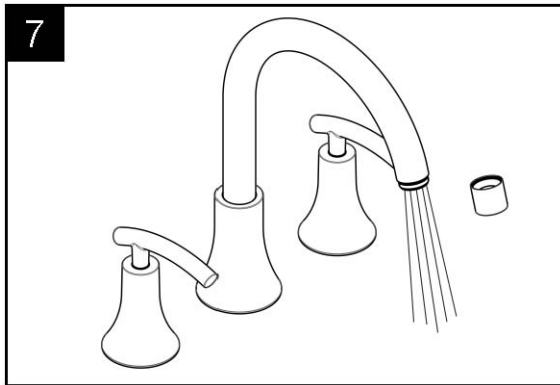
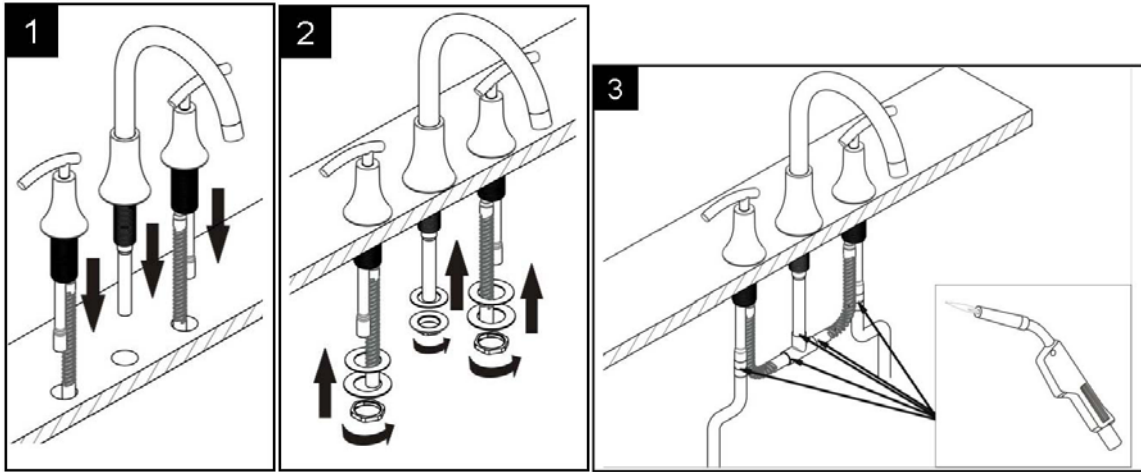
Welding Torch



Tee

SAFETY TIPS:

- If you use soldering for the installation of the faucet, the seats, cartridges and washers will have to be removed before using flame. Otherwise, warranty will be void on those parts.
- Cover your drain to avoid losing parts.



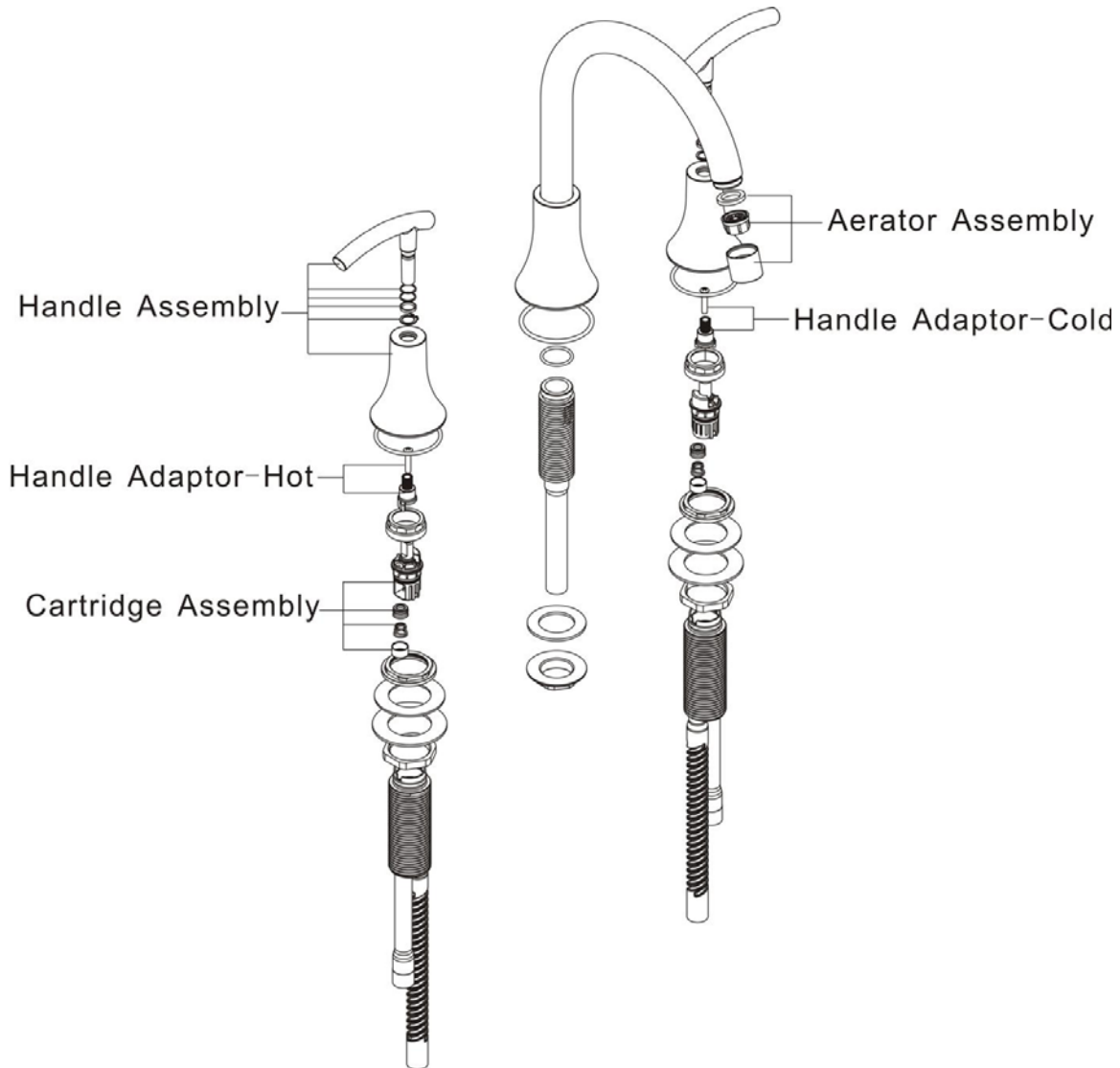
-Please keep aerator wrench to allow for removal and cleaning of aerator.

Trouble-Shooting

If you've followed the instructions carefully and your faucet still does not work properly, take these corrective steps.

<u>Problem</u>	<u>Cause</u>	<u>Action</u>
-Leaks under the deck -Aerator leaks or has an inconsistent water flow pattern	-Inspect supply line, tee and flex line connections -Aerator is dirty or mis-fitted.	-Tighten connections where necessary -Unscrew aerator remove any debris, check seating of rubber seal then re-assemble aerator

Replacement Parts



Limited Lifetime Warranty

Luxier USA warrants to the original purchaser that its products will be free from defects in workmanship and materials. This warranty does not cover any other labor or service charges associated with the removal, repair, or reinstallation of Luxier products. This express warranty does not apply to products that have been damaged as a result of misuse, abuse, negligence, accident, faulty installation or maintenance practices and/or used in any manner contrary to those recommended by the manufacturer.